



Honda Odyssey

Northstar and Summit Conversions

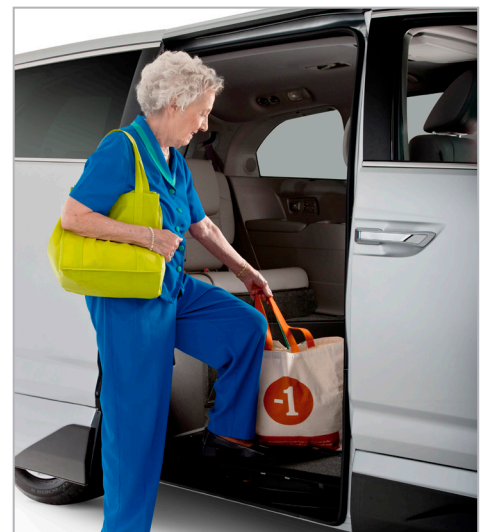




VMI Northstar™

Power In-Floor Ramp

VMI pioneered the Northstar in-floor ramp system in 1993 to satisfy wheelchair user needs for additional interior space and a safe, clean, obstruction-free vehicle interior. After two decades of refinement, the Northstar remains the most technologically advanced ramp system on the market. The Northstar ramp simply slides out from within the vehicle floor, rather than taking up valuable space inside the vehicle. The significant advantages of the Northstar in-floor ramp system over traditional fold-out ramps make it VMI's best-selling conversion.



Obstruction-Free Doorway

Safe entry and exit without deploying the ramp for able-bodied passengers.



Interior Space

Ample interior space for wheelchair maneuverability.



30" wide ramp with 800 lb capacity accommodates large power wheelchairs!



In-Floor Ramp

Stowed ramp is protected within the vehicle floor with no squeaking or rattling. In-floor ramp keeps dirt and debris from entering the vehicle cabin.



Sure Deploy™

Provides a simple way to operate the ramp in the event of vehicle power loss.



VMI Summit™

Power Fold-Out Ramp

The VMI Summit fold-out ramp system features a fully powered, fold-out ramp. The Summit ramp stows inside the vehicle cabin and smoothly extends outward when deployed. The ramp is designed with 2" side rails to provide an additional level of comfort when negotiating up and down the ramp.



Easy Access to Door Handle

VMI's Summit ramp does not block the interior sliding door handle.



Ramp Perforations

The ramp perforations help remove debris and provide additional traction for wheelchair access.



Anti-Rattle Mechanism

The anti-rattle mechanism helps to ensure a quieter ride.



Rounded Corners

Rounded ramp corners make it easier to maneuver up and down the ramp in tight parking situations.

Standard Features



Easy Front Row Access

The front row floor is free of obstacles to accommodate wheelchairs in the driver and front passenger positions.



All VMI conversions come with 3 year / 36,000 mile* warranty coverage!

** whichever comes first*



Engineered to minimize interior noise.

Removable front seats are equipped with rolling casters, making them easy to remove and lock back into place.

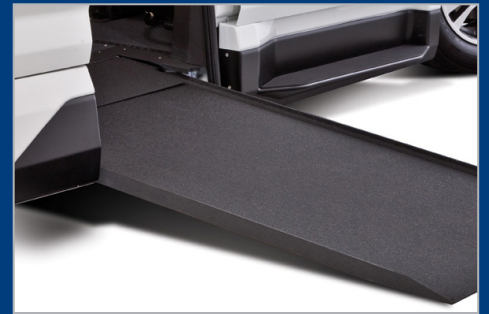


Lowered floor allows the wheelchair user a clear line of sight and provides generous headroom.



One-Touch Controls

One-touch controls make it easy to deploy or stow the fully powered ramp system at the touch of a button.



PowerKnee™

Lowers the vehicle to provide a reduced ramp angle for easy entry & exit. Can be deactivated for deployment onto a curb.



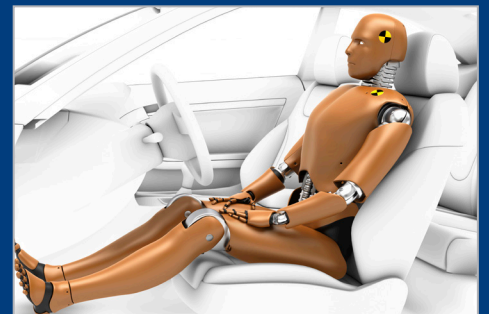
Fold-Down Footrest

Offers additional comfort for passengers seated on the rear bench.



Ground Clearance

High clearance reduces scraping caused by speed bumps, crested pavement, or dips.



100% Crash Tested

Meets or exceeds all Federal Motor Vehicle Safety Standards governed by NHTSA (National Highway Transportation Safety Administration).

Optional Features



Step Flares

- Allows easy access to front-row seating on both driver and passenger sides
- Microspike textured non-slip surface
- 400 lb weight capacity
- Color-matched to each vehicle



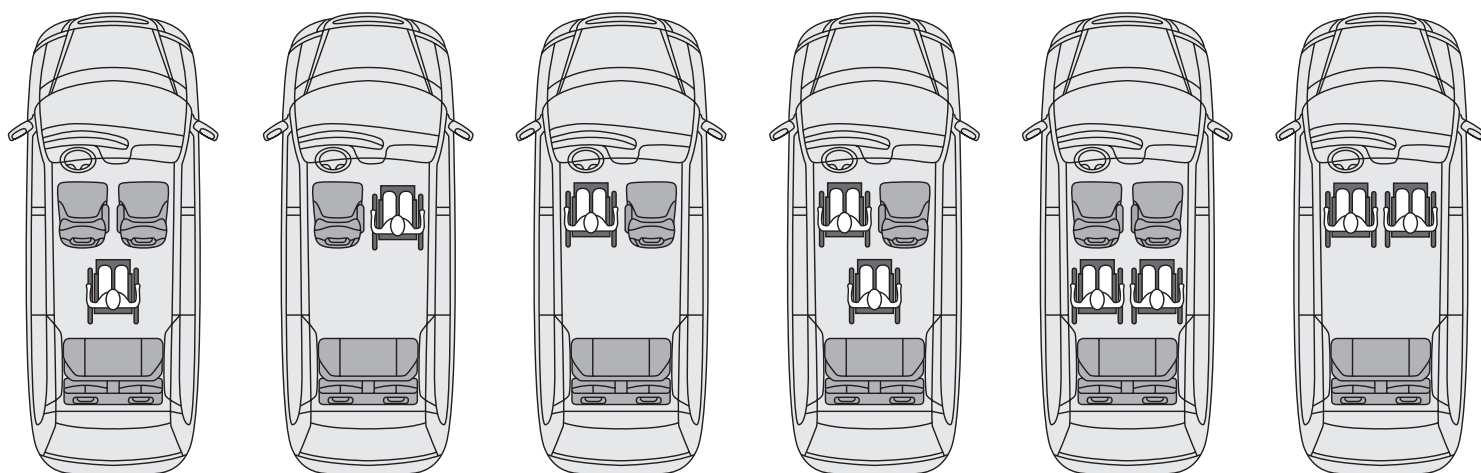
Durafloor

- Unique rubberized flooring
- Provides excellent traction for wheelchairs
- Durable and easy to clean
- Full layer of insulation reduces noise

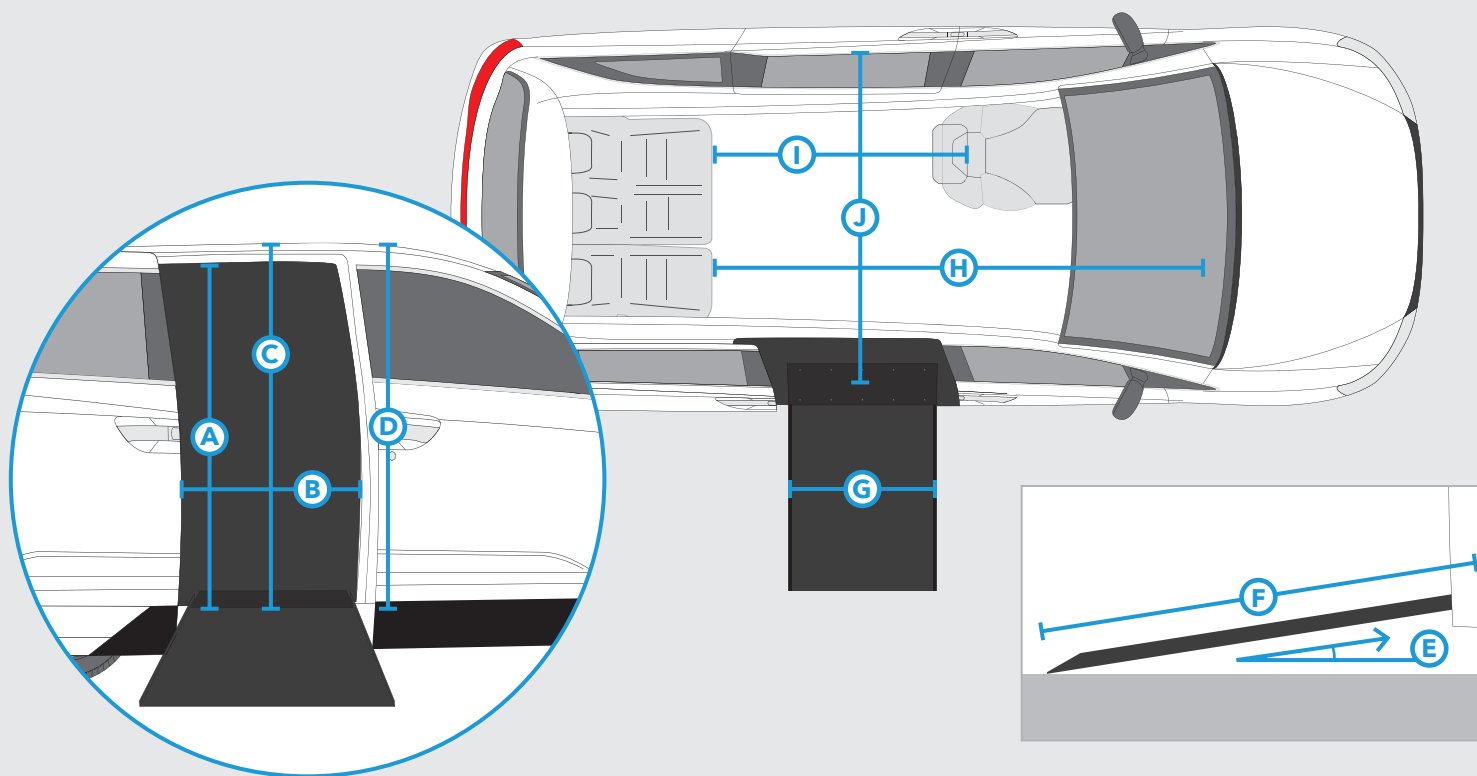


Seating Options

Multiple seating options for VMI's Honda Odyssey conversions allow for independence and flexibility. Wheelchair users can choose to drive from their chair, sit in the front passenger position, or ride in the middle of the van. This diagram shows just a few of the many possible seating options.



Specifications



Specifications

	Northstar	Summit
A Door Opening Height	55" ± .25"	55" ± .25"
B Door Opening Width	30.75" ± .25"	30.75" ± .25"
C Interior Height at Center Position	60" ± .25"	60" ± .25"
D Interior Height at Front Position	57.25" (w/o sunroof) 56.25" (w/ sunroof)	57.25" (w/o sunroof) 56.25" (w/ sunroof)
E Ramp Angle	8° ± .2° (w/ PowerKneel™ on)	10° ± .2° (w/ PowerKneel™ on)
F Ramp Length (angled ramp and transition plate)	59" ± .25"	49.5" ± .25"
G Ramp Width (usable)	30"	28.87"
Ramp Capacity	800 lbs	600 lbs
H Floor Length Overall	91.5" ± .25"	91.5" ± .25"
I Floor Length Behind Front Seats (from B pillar)	61.75" ± .25"	61.75" ± .25"
J Floor Width	60" ± .25"	60" ± .25"
Ground Clearance	5.5" ± .25"	5.5" ± .25"
Overall Vehicle Height	73.5"	73.5"



Imagining Possibilities in Everything We Do

For more than 25 years, VMI has applied its innovation and expertise to build advanced mobility products that allow our customers to experience greater freedom and access to life. We are committed to you and understand how transportation can bring you greater freedom and independence. Our quality, state-of-the-art lineup of mobility products provides ease of use, maneuverability and flexibility. All of our vans have been 100% crash tested and include a 3 year / 36,000 mile (*whichever comes first*) conversion warranty.



Dealer Network

Our more than 500 dealers are trained to carefully evaluate each customer and his or her unique needs in order to recommend the right mobility product. Taking into consideration factors such as how you plan to use your mobility product and your personal disability and diagnosis, our certified mobility consultants will pair you with the right vehicle, lift, or accessory to enhance your independence. It's all part of our commitment to provide superior customer service and the most fulfilling ownership experience.



Proud Member
Since 1990



Proud Sponsor
Since 1999



855-VMI-VANS • vmivans.com • 5202 S 28th Place **Phoenix, AZ** 85040
(864-8267)